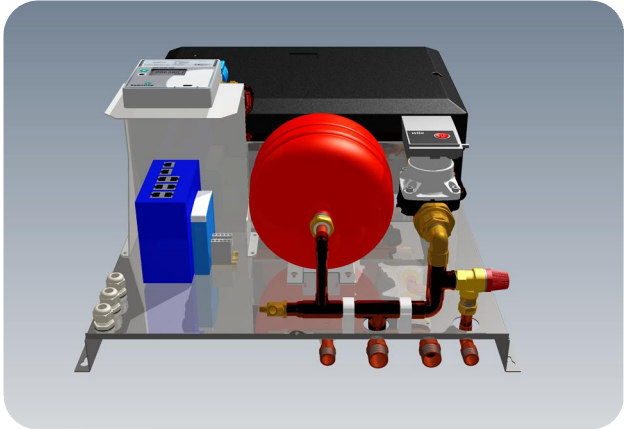
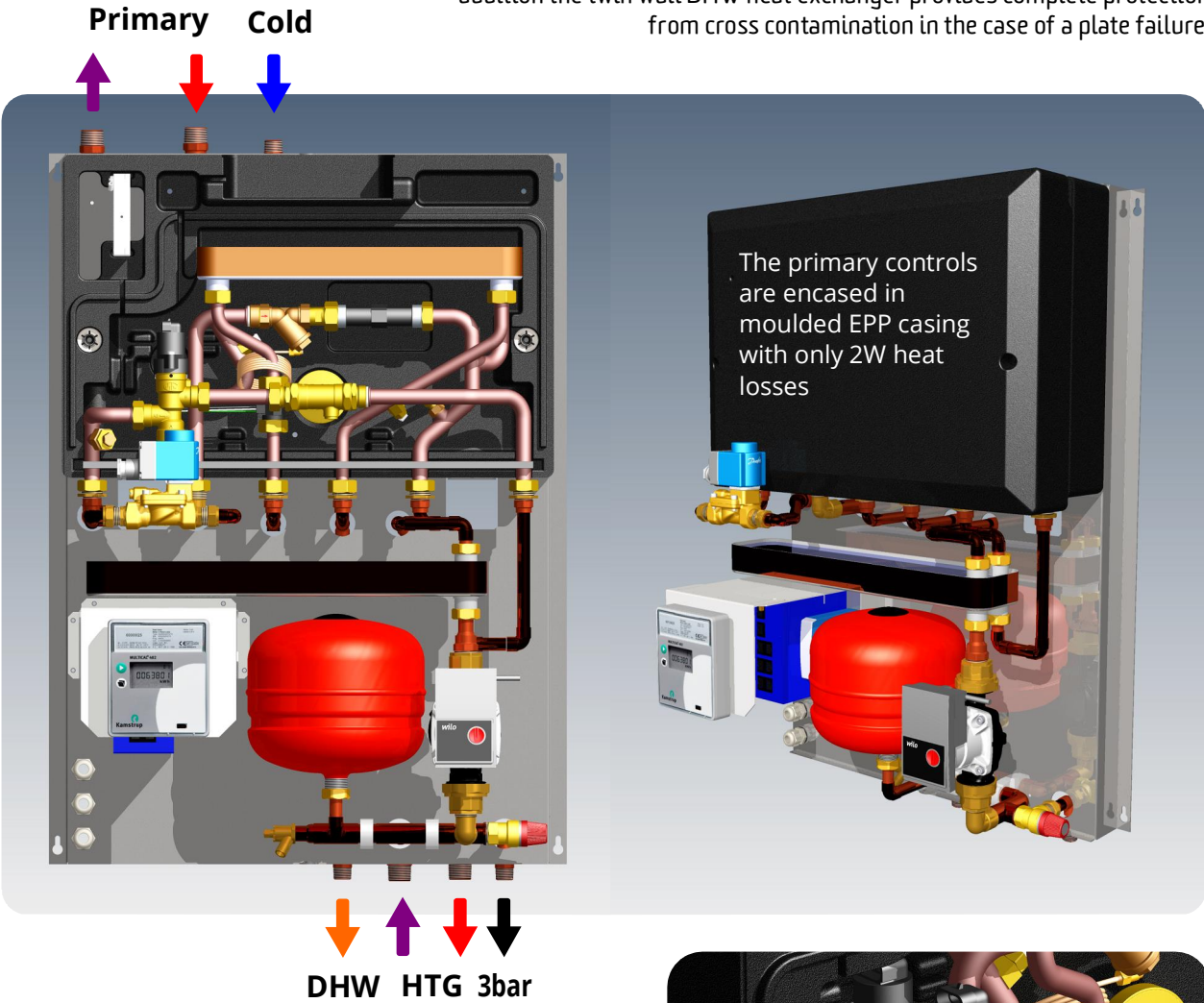
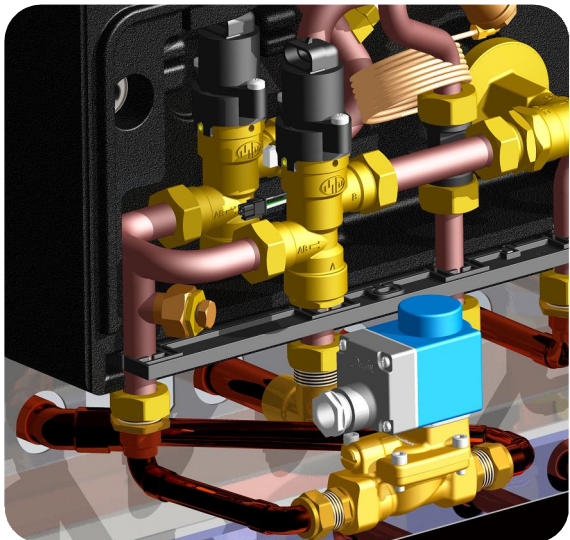


ETHER Twin Plate Electronic HIU, with Ethernet

The ETHER HIU is the first of the new generation of HIUs, using electronic stepper motor controls. It is designed to deliver very low central heating loads under 5kW while maintaining low primary return temperatures. In addition the twin wall DHW heat exchanger provides complete protection from cross contamination in the case of a plate failure.



Systems optionally fitted with Industrial 8-Port Managed Ethernet Switch, used for establishing robust network connections for billing systems.



Stepper Motor Valves are used for primary flow control, with an additional Solenoid Valve fitted for security functionality.