

# MASTER AND MAJOR

Heat Interface Units

kWh

## Introduction to the MASTER and MAJOR

An extremely versatile self-contained, pre-plumbed and pre-wired Heat Interface Unit ideally suited to district heating or central boiler applications

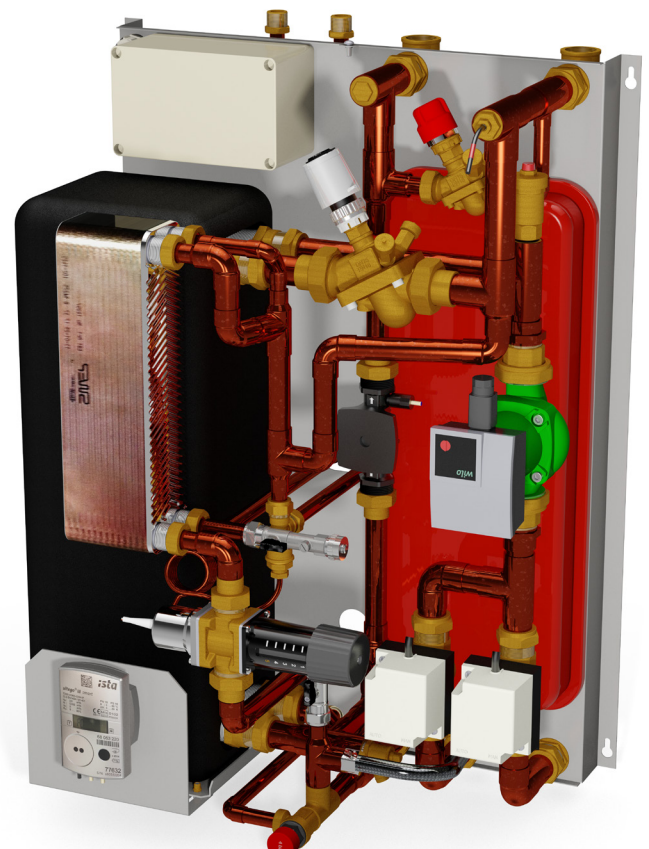
- Instantaneous hot water up to 75kW
- Indirect central heating up to 124kW
- Suitable for heating up to 25 modern individual properties
- Designed to offer many options within one standard casing

The MASTER and MAJOR range of HIU's (Heat Interface Units) provide central heating with optional domestic hot water in properties connected to a single boiler or a district heating system using a central boiler plant.

For many years, there has been an increasing use of centralised boiler plants in property developments. The advantages of removing gas boilers from properties and making use of high efficiency centralised boiler plants are numerous.

Advancing technologies such as combined heat and power (CHP), biomass, extract air heat pumps, waste incineration and solar are mostly uneconomical to employ in individual properties but can be utilised and combined to generate heat to numerous properties. HIU's are fitted into each property and take the heat from the central plant; using this to provide central heating and hot water to taps.

It is easiest to think of an HIU as a boiler, running off heat from large pipes throughout the development, rather than a gas supply in each individual property. Occupants are charged for units of heat, rather than units of gas. The charge is calculated by a heat meter which measures energy use. Higher outputs are suitable for larger properties, existing boiler replacements, connection to existing heating controls or cluster installations.





## MASTER and MAJOR



The unit to be specified with options to provide both domestic hot water and central heating, with connections for up to three zones, allowing a mix of underfloor heating, radiators and a cylinder. Units can be tailored to suit open vented or sealed central heating systems.

The designers at Thermal Integration have been at the forefront of HIU technology for over 20 years, and the MASTER & MAJOR HIU models are built on this experience and can be fully customised to suit most new or retrofit installations.

The MASTER is an extremely versatile single plate heat exchanger unit, capable of producing 124kW of heating output. It is self-contained, pre-plumbed, pre-wired and ideally suited to district heating or central boiler applications. The platform design allows units to be tailored from numerous options to meet the customers' requirements.

The MAJOR has all the options of the MASTER but is also fitted with an additional plate heat exchanger to allow for instantaneous domestic hot water production.

Each unit is fitted within a white painted casing measuring 750 x 465 x 370mm, making it one of the most compact units on the market for its outputs. Not only are the MASTER and MAJOR compact but their design still allows accessibility for service and maintenance.

Both the MASTER and MAJOR are optionally fitted with a primary circuit trickle flow, to maintain heat within the unit, external to the heat metered circuit. This provides frost protection of primary pipe work without affecting metered energy use.

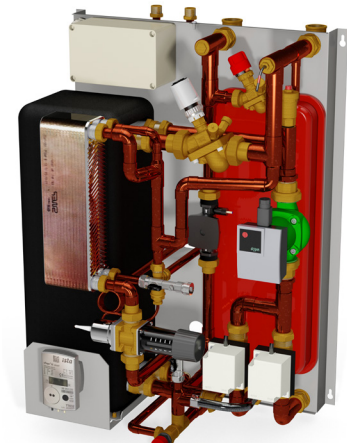
## Features & Benefits

- Instantaneous hot water up to 75kW
- Indirect central heating up to 124kW
- Compact design, no need for clearance either side for servicing
- Copper brazed plate heat exchangers
- Insulated removable casing for ease of servicing
- Insulation box for primary plate heat exchanger
- Latest generation of pressure independent controls
- Accurate domestic hot water temperature control
- High efficiency 'A' rated heating pump
- Range rated outputs from one unit
- Standard connections:-primary flow & return top / central heating flow & return bottom
- Automatic air vent on secondary circuit
- WRAS approved (components)

## Options

- Anti-tamper security fixings on casing and heat meter
- Various heat meter and billing options
- Optional wireless heat metering compatible with aftermarket billing systems
- Built-in 10 litre expansion vessel
- Built-in filling loop
- Built-in security valve for instant landlord isolation
- Customisable mains cold water and domestic hot water pipe work positions
- Primary circuit trickle flow to maintain heat within the unit
- External cold water meter

# Model Examples - Other models also available



Dual Zone CH + Unvented Kit & Instant DHW



Dual Zone CH & Instant DHW



Single Zone CH + Instant DHW



Dual Zone CH + Indirect Cylinder Feed



Single Zone CH + Un-Valved Feed



Single Zone CH + Direct Primary Feed



Electronic CH Temperature Control



Mechanical Return Temperature Limitation



MAJOR and MASTER Case

# MASTER + MAJOR

## Warranty

- Two years when commissioned by a Thermal Integration approved engineer (subject to terms and conditions, from date of commissioning)



Distributed by Specflue

Thermal Integration Ltd  
Windham Road  
Chilton Industrial Estate  
Sudbury, Suffolk,  
CO10 2XW  
Tel: 0845 241 1441  
[www.heatweb.com](http://www.heatweb.com)